

scanning accuracy  
up to 0.0183 mm

 EVIXSCAN 3D



 EVIXSCAN 3D

## Heavy Duty Optima

### High-precision 3D scanning of small and medium size objects

Heavy body construction enables scanning in variable environment. High point density is helpful for scanning of small, medium and detailed objects.

Useful for: contactless quality inspection, reverse engineering and rapid prototyping.

- Cameras: 2 x 5 megapixel
- Accuracy: **0.0183 mm**
- Light-source: **Blue LED**
- ToolKit Box support
- IP 31
- Set includes:  
*eviXscan Suite*, tripod, calibration plate,  
transport hardcase

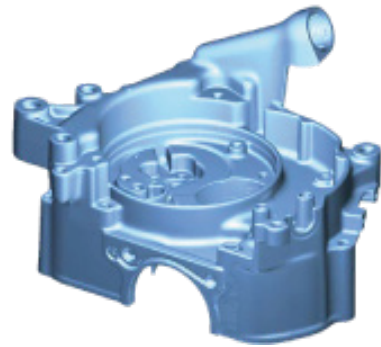
 designed by **evatronix**

**Evatronix SA**

Wiktora Przybyły 2, 43-300 Bielsko-Biała, Poland

[www.evatronix.com](http://www.evatronix.com) · [www.evixscan3d.com](http://www.evixscan3d.com) · [scanners3d@evatronix.com](mailto:scanners3d@evatronix.com) · +48 33 499 59 11

We're ready to solve most common and time consuming engineering problems, like a measurement of objects with areas hard to access: freeforms, pockets, threadedholes, numerous ribs, angles... for quality control



We made this gearbox housing STL model in just 45 minutes

## Heavy Duty Optima

Light-source  
Cameras  
Accuracy  
Scanning time  
Measuring ranges  
Points density  
Software  
Export formats  
Computer requirements  
Computer connection

Blue LED  
2 x 5 Mpix  
\*up to 0.0183 mm  
5 seconds  
250 x 170 x 120 mm  
95 pt/mm<sup>2</sup>  
eviXscan Suite  
stl, ply, obj, asc, bin  
Windows 7 (64-bit), 16 GB RAM, CPU i5  
1 x USB 3.0 and HDMI

\* Accuracy determined with the use of the standard DE VDI / VDE 2634, Part 2, 4.1 Ps



We are an authorized 3D Systems partner  
eviXscan software is integrated  
with Geomagic® DesignX™ and Geomagic® ControlX™