

scanning accuracy
up to 0.013 mm

 EVIXSCAN 3D



 EVIXSCAN 3D

Heavy Duty Quadro

Versatile 3D scanning in harsh environment

Aluminium body and carbon fiber beam on Heavy Duty Quadro guarantees precise measurements in harsh environment. Two ranges enable to scan objects of different dimensions: from a few centimeters to several meters.

Useful for: contactless quality inspection, reverse engineering and rapid prototyping.

- Cameras: 4 x 5 megapixel
- Accuracy: **0.013 mm**
- Light-source: **R/G/B LED**
- 2 measuring ranges
- ToolKit Box support
- IP 31
- Laser trackers
- Set includes:
eviXscan Suite, tripod, calibration plate,
transport hardcase

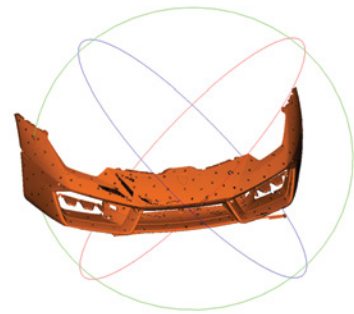
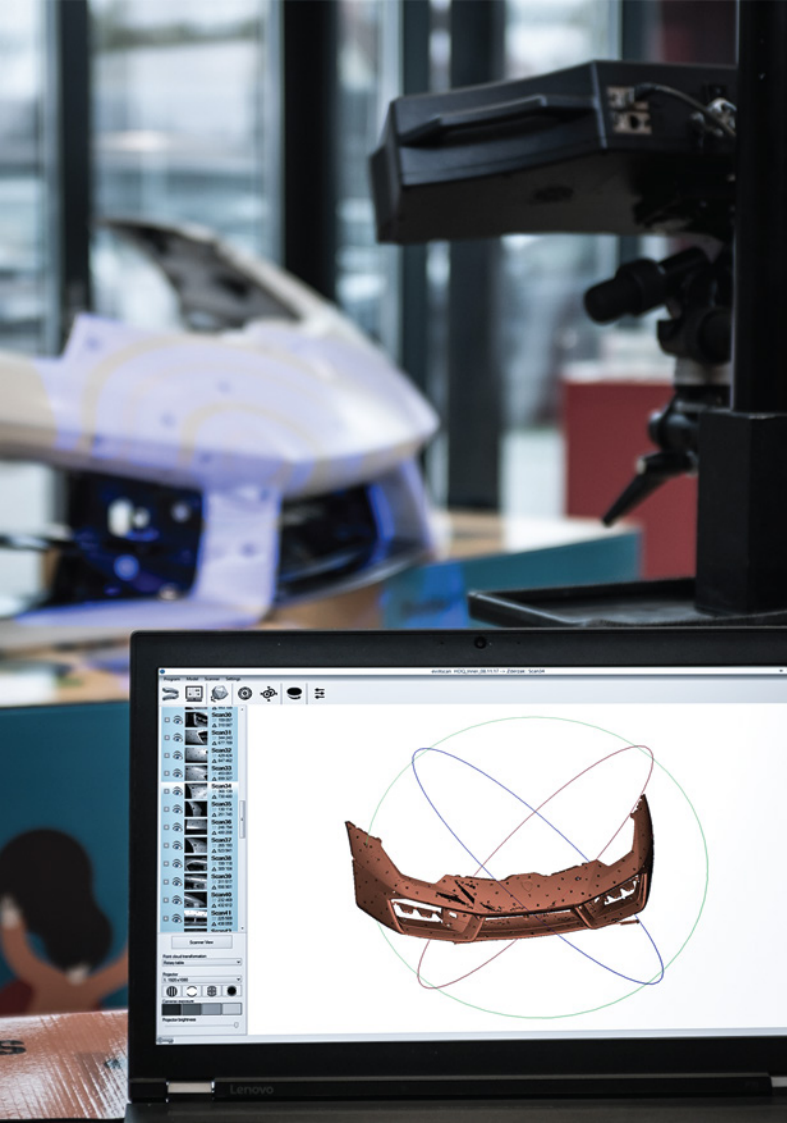
 designed by **evatronix**

Evatronix SA

Wiktora Przybyły 2, 43-300 Bielsko-Biała, Poland

www.evatronix.com · www.evixscan3d.com · scanners3d@evatronix.com · +48 33 499 59 11

Shapers Advanced Design Studio uses
Heavy Duty Quadro for acceleration supercars
redesign process



Heavy Duty Quadro

Light-source
Cameras
Accuracy
Scanning time
Measuring ranges
Points density
Software
Export formats
Computer requirements
Computer connection

R/G/B LED
4 x 5 Mpix
*up to 0.013 mm
5 seconds
370 x 265 x 150 mm / 150 x 115 x 90 mm
41 pt/mm² / 232 pt/mm²
eviXscan Suite
stl, ply, obj, asc, bin
Windows 7 (64-bit), 16 GB RAM, CPU i5
1 x USB 3.0 and HDMI

* Accuracy determined with the use of the standard DE VDI / VDE 2634, Part 2, 4.1 Ps



We are an authorized 3D Systems partner
eviXscan software is integrated
with Geomagic® DesignX™ and Geomagic® ControlX™